



**75<sup>th</sup>**  
**Anniversary**



Celebrating 75 years

1947 - 2022



2022 is  
a very special  
year for us, and  
we are delighted  
to be celebrating  
75 years.

The very first Billington steel fabrication shop opened in 1947 in Barnsley. The company has grown over the years with the addition of Yate, the creation of Easi-Edge and Hoard-it, the acquisition of Peter Marshall Steel Stairs and the purchase of the Shafton site. In 2022, we are very pleased to have launched SPC, our specialist paint facility in Sheffield - a long awaited asset to the Group portfolio. Our ambition is to keep growing with organic expansion and acquisition.



A handwritten signature in black ink, appearing to read "M. Smith", written in a cursive style.

**Mark Smith**  
Chief Executive Officer



Manchester Airport

 **Billington**  
Structural Steelwork

 **Shafton**  
Steel Services

 **Marshall**  
Steel Stairs

 **Hoard-it**  
Environmental Hoarding

 **Brand-it**  
Site Graphic Solutions

 **Easi-Edge**  
Site Safety Solutions

 **Tubecon**  
Specialist Structural Steel

 **SPC**  
Specialist Protective Coatings



*The Glass Works, Barnsley*

## Our History

The Company was established in 1947 by Arnold Billington, a former welder at the Wombwell Foundry. The site on Barnsley Road was previously occupied by Aldham Glass Works and the brothers operated as a small works jobbing fabricator for local industries.

Arnold's younger brother, Rex, joined and the company began to grow, with factory extensions built in the 1950's and 60's. The Company, known as Billington Bros. (Wombwell) Ltd, relied heavily on the fabrication of steelwork for the local coal mining industry.

In the 1970's, the company (trading as Bilcon), became specialists in Cold Stores and diversified into the overseas market, winning its first full turnkey project in 1977 for an egg store in Arbil, Iraq, which initiated a series of other projects in Iraq.

In 1982, AMCO Corporation Plc (AMCO) acquired Billington to help with the rapidly growing need for steel required for the underground mining industry. The business traded as Billington Steel UK Ltd (amongst other names) and won its first conventional steel structure; an extension to Chivers Hartley jam factory in Cambridge.

In the mid-1980s, the company rejoined the British Constructional Steelwork Association (BCSA) and remains an active member to this day.

AMCO acquired the assets of Bristol-based steelwork company, Modern Engineering Ltd in 1984 and began to trade as Modern Engineering (Bristol) Ltd from the company's current site at Yate.

Between 1992 and 2007, growth allowed for various extensions to the offices and factory at the Wombwell, Barnsley site. In the late 1990's, Modern Engineering Bristol Ltd changed its name to Billington Modern Structures before finally becoming Billington Structures Ltd.

By now, Billington were one of the largest subsidiaries of AMCO and contributed £30 million gross turnover to the AMCO group in 2003. Tube Engineering, a neighbour at the Yate site, was acquired in the same year and traded as Tubecon until becoming integrated into the Yate site.





RAF Coningsby



The Glass Works, Barnsley



Greenwich Peninsula

In 2003, the Easi-Edge barrier was developed to prevent falls from height when a structure is being erected. Easi-Edge originally traded as a division of Billington Structures and grew rapidly to its own market leading position.

In April 2008, AMCO Corporation Plc changed its name to Billington Holdings Plc following the investment of Easi-Edge and Tubecon.

2011 investment saw Billington Structures become the first Steelwork Contractor to 'CE Mark' a primary steelwork frame in the UK, and was proud to erect the very first CE marked steel structure in the UK. In the same year, Billington Holdings acquired Peter Marshall Steel Stairs Ltd, creating a new division specialising in the design, fabrication and installation of highly engineered steelwork, staircases and balustrade systems.

Billington Holdings continued to grow with the development of Hoard-it in conjunction with a major contractor during 2010. Hoard-it provides reusable and eco-friendly site

hoarding solutions on a hire and sale basis and has developed into a stand-alone business working for a wide range of blue chip main contractors across the UK.

In 2015, the Group acquired the Shafton site after it was occupied by Sherling Steel - principally engaged in steel and plate processing for the steel industry. With a combined usable area of 181,000 sq ft, Shafton remains the largest strategic investment made in the Group's history.

In 2019, the Group's turnover reached more than £100m following the success of subsidiary companies.

In January 2022, the Group announced the acquisition of the trading assets of Orrmac Coatings Ltd, launching Specialist Protective Coatings Ltd. Based in Sheffield, the company offers a wide range of paint treatments including anti-corrosion and fire protection systems across a range of industry sectors.



*The Diamond, The University of Sheffield*

# Group Timeline



Billington Structures established by Arnold Billington

1947

1982  
Billington became part of AMCO

Acquired the assets of Bristol-based steelwork company, Modern Engineering Ltd (Yate site)

1984

1985  
Billington rejoined the British Constructional Steelwork Association (BCSA) and became an active participant

2000  
Tube Engineering, a neighbour at the Yate site, was acquired and traded as Tubecon



Created Easi-Edge

2003



AMCO became Billington Holdings Plc

2008



Created Hoard-it

2010



Acquired two large industrial buildings previously occupied by Sherling Steel, forming Shafton Steel Services

2015



Acquired assets of Ormac Coatings Ltd, to form Specialist Protective Coatings Ltd

2022



Billington Holdings acquired Peter Marshall Steel Stairs Ltd

2011

2022

2011

Billington Structures became the first Steelwork Contractor to 'CE Mark' a primary steelwork frame in the UK

2021

Hoard-it launch a sub-brand for graphics, Brand-it



2022

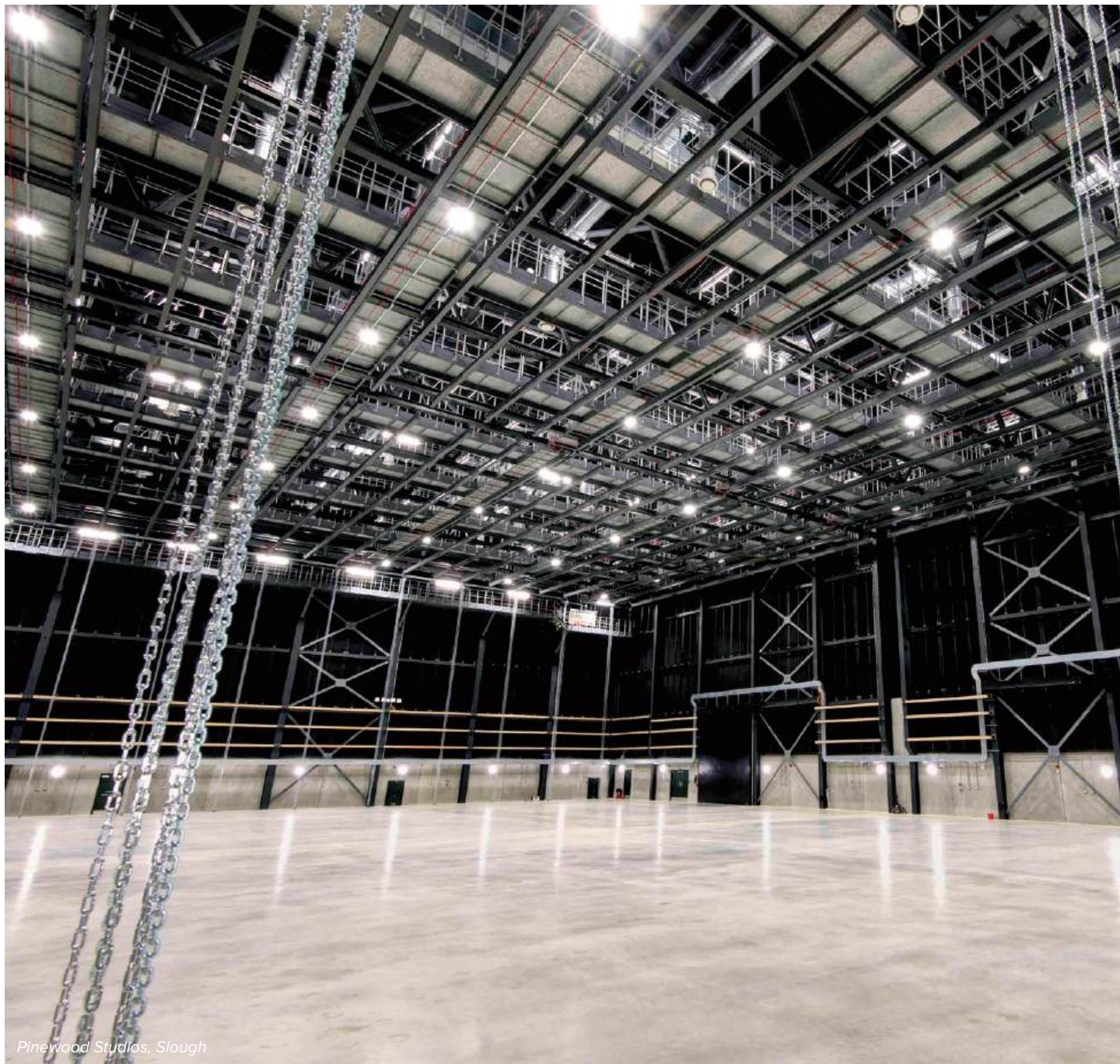
Billington Structures joins SteelZero



# Structural Steel Specialists

Billington Structures are one of the UK's leading structural steelwork contractors, offering a professional service for over 75 years. With two steel fabrication facilities in Barnsley and one in Bristol we have the capability to process over 50,000 tonnes of steel per annum and can service clients at locations throughout the UK and Europe.





*Pinewood Studios, Slough*



*Thorpe Park, Leeds*

## FACTS

- Billington was started by two brothers in 1947; Rex Billington who had just left the RAF and Arnold Billington who worked at Wombwell Foundry.
- The Company manufactured the steelwork for the lifting cradle that hoisted the flagship “Mary Rose” from the Solent.
- Billington provided 600 tonnes of galvanised steelwork for Tetley’s Brewers in Leeds.
- Billington supplied steel platforms in the River Severn for the second Severn crossing.
- Billington was erecting the Metro Store in the Heart of Manchester when it took the full blast of an IRA bomb.
- Billington have supplied major steelwork projects to major airports in the UK from CIP Lounges, to Terminals, Travellators and Walkways.
- To commemorate Billington’s 100,000 tonne of steel, a Gold painted steel beam was erected in the Sainsbury Store at Meadowhall shopping complex.
- A Billington employee embarked on a 50-mile Billington charity bike ride and fell in the river Dearne 100 yards after the start, ending his attempt.
- Billington’s first 1,000 tonne contract was Cameron Ironworks, Leeds.

## HIGHLIGHTS

- Sandwell Aquatics Centre, Birmingham
- London School of Economics
- Pinewood Studios, Slough
- Wellington Place, Leeds
- Derby Arena
- Data Centre, Belgium
- Manchester Airport
- All England Lawn Tennis Club, London
- Greenwich Peninsula Energy Centre
- Amazon, Durham
- Eldon Square, Newcastle upon Tyne
- St George’s Park National Football Centre, Burton Upon Trent

## SUCCESS

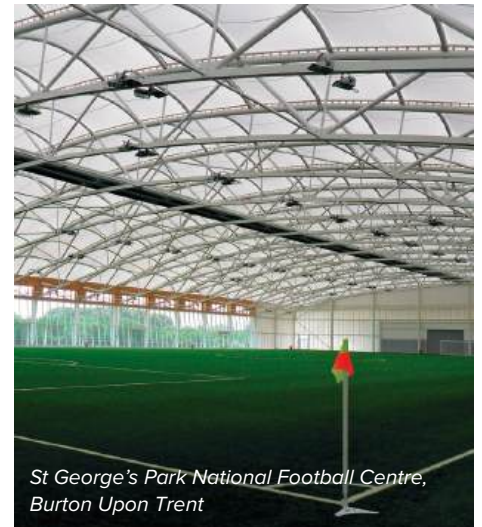
- Billington was one of the first companies on the BCSA’s Register of Qualified Steelwork Contractors the RQSC.
- It was the first Company in the Industry to achieve ISO14001.
- The Magna project won the RIBA Sterling prize “Building of the Year”.
- Billington won and was presented with, the very first Marketing Award at the CMCA Construction Marketing Awards 2001.
- Billington was instrumental in the development of STRUCAD 3D software for structural modelling.
- Billington was the first manufacturer in the industry to provide a comprehensive CDROM tour for their customers.
- Billington Structures became the first Steelwork Contractor to ‘CE Mark’ a primary steelwork frame in the UK and was proud to erect the very first CE marked steel structure in the UK.
- Billington won various Structural Steel Design Awards (SSDA) and Tekla Awards.

# Tubecon

**Specialist Structural Steel**

## Specialist Structural Steel

Tubecon is one of the UK's leading structural steel fabricators specialising in Architecturally Exposed Structural Steelwork (AESS) and other complex structures work for the UK Construction and Rail Infrastructure markets, where a high level of collaboration with the design team is required. Dating back to 1945, Tubecon's origins began in agricultural farm buildings. Moving through the decades with innovation and dedication, Tubecon truly deserve their longstanding market position as industry experts.



*St George's Park National Football Centre,  
Burton Upon Trent*



*Bevis Marks, London*



Coca Cola Olympic Pavilion - London 2012 Summer Olympic Games

## FACTS

- Tube Construction Ltd was formed in 1945.
- Tube Engineering (Bristol) Ltd was acquired by Billington Structures Ltd in 2000.
- Unimer style steel is found in many buildings still in service today. The light weight tubular design was very popular and led on to tubular designs utilising the hot finished circular sections produced by TATA.
- 70ft triangulated girders represents half the roof of a 13,500sqft warehouse built at Trafford Park, Manchester.

## HIGHLIGHTS

- Gatwick Airport
- Bristol City Football Club new stand
- Heathrow Canopy
- London Science Museum
- Wayfinding Gantry for London's Olympic Park
- Coca Cola Beatbox Pavilion, London
- Bevis Marks Roof Garden, London
- All England Lawn Tennis Club, London
- Hurlingham Park, London
- St George's Park National Football Centre, Burton Upon Trent

## SUCCESS

- During the 1970's, the business steadily grew with customers ranging from British Rail, Volkswagen and British Airport Authorities, where practically every airport in the UK employed Tubecon to provide and install tubular steel.
- Tubecon produced the VIP enclosure in Hyde Park, which is believed to be the largest demountable structure of its kind seen in the UK.
- Tubecon received official BOA (British Olympic Association) designation and a license under the Supplier Recognition Scheme as Supplier of Architectural Structural Steelwork (Olympic Park) to the London 2012 games.

 **Easi-Edge**  
Site Safety Solutions

# On-Site Safety Solutions

Easi-Edge are a leading site safety solutions company, providing innovative and effective products that protect perimeter edges, internal voids, roofs, stairs, lift shafts and loading bays. Easi-Edge perimeter barriers were developed in 2003 to prevent falls from height whilst a structure is being erected. Easi-Edge traded originally as a division of Billington Structures and grew rapidly to its now market leading position.





*Blundell Street, Liverpool*

## FACTS

- Easi-Edge is a founder member of the Edge Protection Federation (EPF) designed to make edge protection as safe as possible.
- Easi-Edge have supplied enough barriers to site to take you to the moon 5 times, or to take you around the world 50 times.
- In 2019, was the biggest year for supply in barriers with 170,000lm.
- In 2019, they had the biggest output of materials for one week with 6,500lm.
- Easi-Edge's largest postcode district is Manchester with 212 projects.
- The North West is their biggest region with 777 projects.

## HIGHLIGHTS

- Largest project supplied is for Tolent Construction – Project Milburngate Durham of 9,500lm.
- Longest hire is 3 years for project Cornbrook in Manchester.
- Supply of 1300lm of timber fix for The Open Academy, Norwich in 2009.
- Supply of 103 Core-Safe gates for Media City, Manchester in 2009.
- Stock of 115,000lm with a value of £5m.

## SUCCESS

- Easi-Edge has worked with 514 clients since the establishment of Easi-Edge in 2006.
- The greatest number of projects in one year was 2011 with 303 projects.
- Easi-Edge is accredited under the Steel Construction Sustainability Charter, the first edge protection provider to successfully meet the high standards of the scheme.
- In 2004, in their very first year, Easi-Edge secured runner up position in the 'Best Health and Safety Product' in the Building Magazine Health and Safety Awards.

**Hoard-it**  
Environmental Hoarding

**Brand-it**  
Site Graphic Solutions

# Environmental Hoarding Solutions

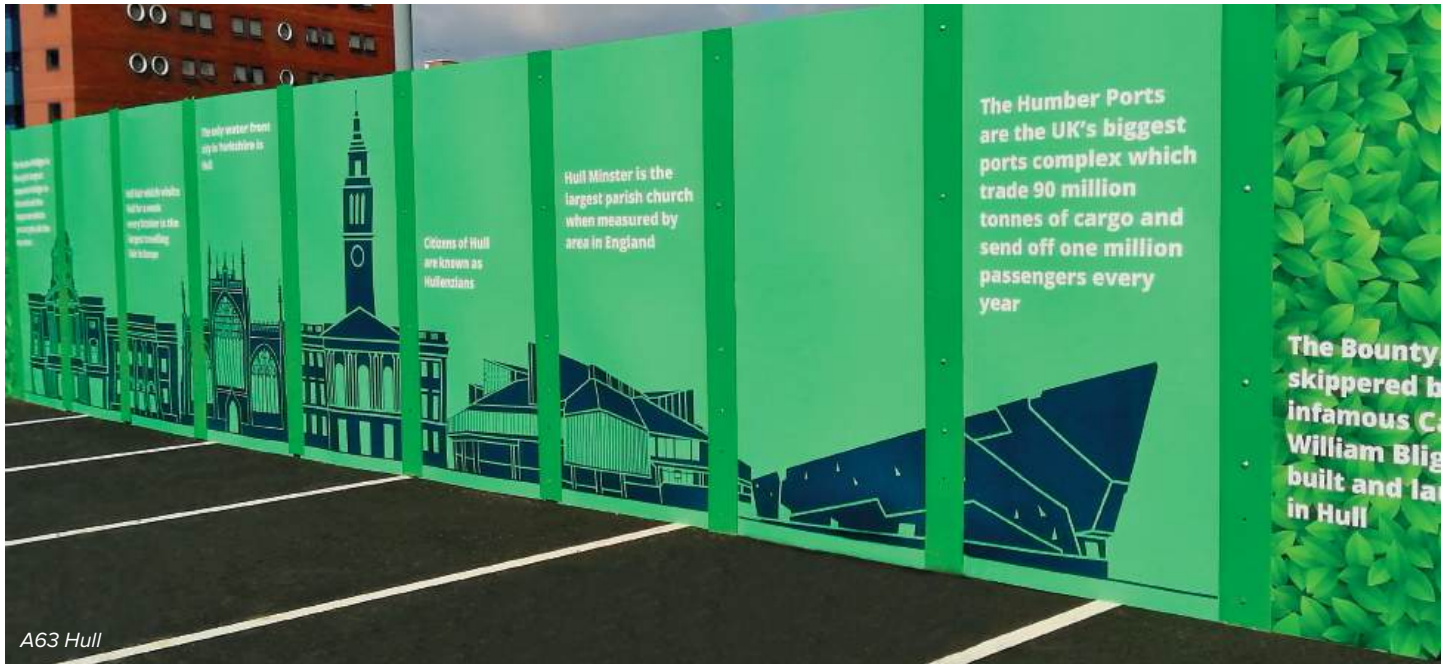


National Space Centre, Leicester



Birmingham City Council

Hoard-it design, fabricate, manage, erect, hire and sell environmentally sustainable reusable hoarding solutions. Launched in 2010, the patented on-ground Hoard-it system is designed by chartered structural engineers and has been independently tested. In 2021, Hoard-it launched Brand-it, the graphics division to provide clients with all site graphics solutions.



A63 Hull

## FACTS

- The Hoard-it patented system was created in conjunction with a major contractor in 2010.
- The system comprises of only 5 components, all of which are fully reusable.
- The largest job ever installed is 2500m long, installed in 2022.
- As part of their offer, Hoard-it also supply site accommodation, trackway and solar powered security cameras.
- The Hoard-it system can be installed 4 times quicker and more efficiently than conventional hoarding and fencing.

## HIGHLIGHTS

- Anfield Stadium, Liverpool
- Wembley Park, London
- Kings Cross Station, London
- Pinewood Studios, Slough
- Wellington Place, Leeds
- Birmingham City Centre

## SUCCESS

- Hoard-it won the 2019 National Supplier Award for Considerate Constructors.
- In 2022, Hoard-it picked up a specialist supply chain award from Kier Construction for Kentmere Ward project.
- Hoard-it was supplied for the various Nightingale hospitals built for the Covid pandemic.



# Staircases, Balustrade and Secondary Steelwork

Peter Marshall Steel Stairs are a specialist company principally engaged in the design, fabrication and installation of highly engineered steelwork, staircases and balustrade systems. Based in Gildersome, Leeds, they are one of the leading fabricators of steel staircases for residential, domestic and commercial applications in the UK and Europe.



STEAMhouse - Birmingham City University



## FACTS

- Peter Marshall Steel Stairs was founded in 1970 as Peter Marshall (Fire Escapes).
- Billington acquired the trading assets in 2011.
- Peter Marshall can install products in buildings to a height of 50 storeys.
- The Company is certified to UKCA and Execution Class 3 and are proud to have achieved compliance.

## HIGHLIGHTS

- Leadenhall, London
- Thanckes Oil Fuel Depot, Cornwall
- 20 Ropemaker Street, London
- Leeds Train Station
- Balmoral Tanks, Rotherham
- Old Granada Studios, Manchester
- STEAMhouse - Birmingham City University
- Pinewood Studios, Slough

## SUCCESS

- Peter Marshall provided 36 staircases for the London Olympics Aquatics Stadium.
- The Company's largest single order was secured in 2021 worth £1.85m.
- Peter Marshall Steel Stairs is one of the largest companies in its sector.



# The Home of Steel Processing

**Shafton Steel Services is a state-of-the-art steel processing and profiling facility. Shafton Steel Services can handle one-off jobs to large contracts with steel fully processed up to execution class 4 in UKCA marking.**



## FACTS

- Shafton Steel Services is based on a 25-acre site in Shafton, Barnsley.
- Shafton is the largest manufacturing facility in the Group.
- It has one of the best equipped steel service centres in the UK.
- Shafton can produce welded plate girders up to 22m long.
- Gas cutting options are available up to 100mm with a cutting length up to 24m long.



## Specialist Protective Coatings

# Surface Preparation and Protective Treatment

The latest edition to the Billington Group, SPC launched in January 2022. Based in Sheffield, SPC specialise in surface preparation and the application of protective coatings across all sectors including Rail, Highways, Defence, Petrochemical, Energy, Structural Steel, and Infrastructure. SPC facility measures 55,000sq ft dedicated to surface preparation and paint treatment systems.

## FACTS

- The Company's workshop offers shotblasting (automatic & manual lines) and lifting capabilities amongst the greatest in the UK.
- SPC work across all sectors including Rail, Highways, Defence, Petrochemical, Energy, Structural Steel, and Infrastructure.
- The Company offers on site painting, touch up and repairs service to clients.



# Award Success

We are proud that our fantastic projects across the Group have been formally recognised over the years.

- 1 Newhurst EfW Facility** - 2022 Industrial Award Winner UK Tekla Awards.
- 2 The Glass Works, Barnsley** - 2022 Structural Steel Design Awards Shortlist.
- 3 Kentmere Ward Project** - Kier Construction - North West Specialist Supply Chain Partner Award for Hoard-it.
- 4 Shepperton Studios** - Sir Robert McAlpine Safety Award.
- 5 Castlepoint Car Park, Bournemouth** - Kier Construction - Health and Safety Ambassador Award.
- 6 Sandwell Aquatics Centre, Birmingham** - 2021 Sports and Recreation Projects Award Winner UK Tekla Awards.
- 7 Wenlock Works (Shepherdess), London** - 2021 Structural Steel Design Awards (Merit).
- 8 Pinewood Studios, Slough** - 2021 Structural Steel Design Awards Shortlist.





# Our People

**Our strength comes from the talents, ideas, and experiences of our people. We have many employees who have started with us as trainees or apprentices fresh from school or college who have stayed with us over the years. Many employees have worked their way up the ladder, starting off as fabricators on the shop floor and progressing into estimating, draughtsmen, purchasing and management roles.**

We have a number of employees who have well surpassed the 40 years' service milestone, and it is these constants that truly make a company work and provide a sustainable business. Their extensive knowledge and experience is passed on to all new starters and apprentices.

For 75 years, Billington has been a local business offering people of the community, employment and opportunities. As a company, we aim to nurture the talent within and encourage our staff to progress.

**31%** of employees have  
been with us for  
**15 years**  
or more





*Long-standing tradition to ring the bell for winning jobs*



# In the Press...

## Looking towards exports to Europe



PICTURED above: A Billington Structures worker operating computer-controlled machinery at the company's factory. (S)

DEVELOPMENT of state of the art technology has helped keep Wombwell-based Billington Structures Ltd among the UK's top five structural engineering companies.

The firm has helped develop a computerised design and drawing system which builds up a three-dimensional model of a building frame.

Known as Struaid (Structural Computer Aided Drawing), the computer designs every part of a building frame from massive steel girders down to the smallest nuts, bolts and washers. After the design is completed and checked, the computer links with plant on the factory floor.

Billington Structures became involved in the development of Struaid in the mid-1980s with other leading structural engineering companies.

The result is a computer system which can be instantly up-dated and which other design and fabrication companies in the country are now following.

Billington Structures, which was the second UK company to be awarded the BS

5750 quality assurance standard, was formed in 1947. Projects include a new stand for Oldham Athletic F.C., a traveller bridge linking Manchester Airport to a railway station, six, long-tube roof for the refurbishment of Rury tower and, closer to home, designing building frames for a distribution centre on the outskirts of Barnsley and providing 2,000 tonnes of steelwork for the Gillingham stadium sports centre.

Struaid does the work of four men in the firm's drawing office alone. The firm says customers have benefited from fewer errors, reduced lead times and the firm's ability to make the latest possible modifications to design. The term 'back to the drawing board' is almost out of date.

Looking to the future, Billington Structures hope to start exporting to Europe.

Sales Manager, Mr. Bob King, said: "We are in a very competitive market. We have invested in the latest technology and that has meant we have kept the edge on our rivals in the industry."

BILLINGTON STRUCTURES LIMITED

## Billington Structures Limited Celebrating Their Golden Jubilee This Year



Steve Farham, Managing Director, Billington Structures Ltd.

totally autonomous company, but with the financial and practical backing of the Group.

Their positive progress and enviable reputation continued to flourish. As the mining industry declined, Billingtons focused on the new developing market of construction. By 1989 a new office complex, consisting of a company headquarters, engineering and technology division was built on the original site. At the same time the factory size was doubled to cope with the increased demand. Forward thinking brought about considerable investment in new technology, and Billingtons were one of the first to utilise Computer Aided Drafting (CAD).

Throughout their history, and increasingly since joining the Amco Corporation Plc, Billingtons have looked in new systems and automation to provide an even better service for their clients. Considerable investment has been made, enabling the installation of state of the art CNC machinery, further refining the production process.

The combination of Billingtons' approach and their status, led to them being invited by AccCad in 1989 to help develop Struaid, a specialised 3D modelling software

"We have a very adaptable attitude and an equally adaptable workforce. We cover the whole spectrum from light, complicated tubular structures to heavy plate girders."

Billington Structures Limited boasts a stable and progressive history within the steel industry. They are a company that have not only stayed the course, but have grown steadily in both size and stature to become a market leader. Founded by two brothers, Arnold and Rex Billington, in 1947, this Barnsley based company has built an enviable reputation for quality, reliability and service.

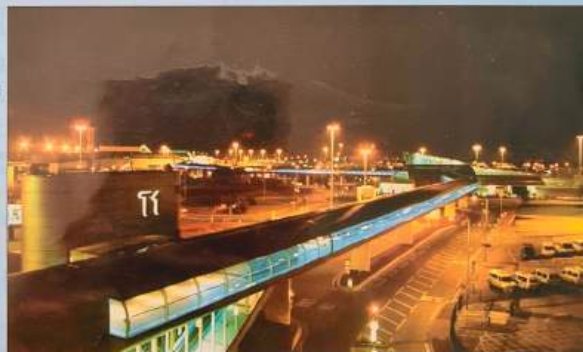
Although the brothers' initial beginnings were built upon touring the local open cast mines, repairing anything made from metal, their

reputation for quality helped to secure the development of the business. In the early fifties they expanded to a permanent base at Wombwell in Barnsley. It was from here that the structural side of the business developed and flourished. Today, the vast modern factory bears no resemblance to the modest building erected 50 years ago.

Billington growth was steady throughout the fifties. When a new director was appointed, during the early sixties the company took a major step forward and expanded further into the constructional steel market. It was to become

a solid foundation for what today is the company's core business. Billingtons grew successfully throughout the next twenty years gaining many key projects in the Middle East and increasing their client base throughout the UK.

By 1982, Billingtons had built a history of successful steel fabrication and an expansive client base. It was during this year that they were acquired by the Amco group to assist with the groups mining activities. Although Billingtons is now a wholly owned subsidiary of the Amco Corporation plc, it is run as a



Manchester Airport Traveller from terminal 1 to the train station.

**BILLINGTON STRUCTURES LTD**  
BARNSELY ROAD, WOMBWELL S, YORKSHIRE S73 8DS  
Tel: 0226 340666 Fac: 0226 755947

**STRUCTURAL STEELWORK**



### Billington scoops award

Billington Structures scooped the steelwork category in the inaugural Construction News Specialists in Construction Awards at a ceremony at Grosvenor House in London last month.

The awards, established with the National Specialist Contractors' Council and the Specialist Engineering Contractors' Group, recognise the "critical role played by specialist contractors of all sizes and types on this country's construction projects, raising the profile of companies that are often the unsung heroes of the industry."

Finalists were shortlisted on the basis of a written submission, and the winner selected following a rigorous panel interview. Companies had to demonstrate their credentials in areas such as technical expertise, business

Billington Structures received the award from Gillian Mitchell, deputy director general of the British Constructional Steelwork Association, which supported the steelwork category along with the Steel Construction Institute and Corus.

The high-profile panel of judges, chaired by Sir Michael Latham, described Billington Structures "as simply a superb company — its exceptionally high standards across the board tipped the balance in its favour".

Fairfield-Mabey was highly commended. The judges described it as "a long-established company that has undergone a culture of change in order to face new challenges" and praised it "for having got to grips with key issues".

Issue Vol.3 Feb.3 Page 17

**BCSA OPEN DAY**

Billington Structures Ltd, the Barnsley of Structural Steel Fabrication

Presenter Dora O'Brien (left) and the BCSA's Gillian Mitchell present the award to Billington MD Steve Farham



Mayor of Barnsley Ken Young presents the Barnsley and District TEC certificate for efficiency in all its employees to Steve Fareham, managing director of Billington Structures Ltd. PH125/3

# Billington named Specialist Contractor of the Year

One of the most closely contested awards at the recent Contract Journal Awards was Specialist Contractor of the Year which was won this year by Billington Structures Ltd with their work on the Magna Science Adventure project in Rotherham.

The £46 million, millennium commission and lottery funded Magna project, was by any standards an extremely challenging structural steel project. Built within the existing 300m long Templeborough steel mill, the project comprises of four connected pavilions, each dedicated to one of the elements, Earth, Air, Fire and Water.

structure that created a lot more site work than usual.

The judges commented, "The contract brought out the best in Billington, we were impressed by the way Billington's business systems delivered. Their communications were excellent, both in acting on information received and providing cost and programme information for the rest of the construction team. Billington's supply chain also came up trumps providing specialist coatings, one-off fittings and a new 25-tonne gantry crane that was modified to suit the project and retained as part of the attraction."

Billington Structures were commended for their ability to work in an extremely constricted environment, sometimes working in holes in the ground and sometimes working high in the cathedral like roof space of the former steel mill. Billington also had to connect the new steelwork to an existing and irregular



Photograph shows Mike Fewster, Operations Director and Bob King Business Development Manager collecting the award for the coveted title of "Specialist Contractor of the Year".

**Billington Structures Ltd**  
Tel: 01226 340666

BILLINGTON STRUCTURES LTD May 1992 17

## A tower of strength and grace

In the hands of a prize-winning specialist, steel can be appreciated as a creative force in structural engineering

by Jim Gibbins

They are there in the Piersman Theatre School at Hall, used in the Structural Design Awards scheme as an "imaginative steel structure" in which "brightly coloured exposed concealed steel beams and columns together with secondary steelwork frame beautifully with the masonry and glazing".

They are there in the Metropolitan at Barnsley, representing 1,000 tonnes of steelwork in the form of a mezzanine of beams and column offices and large garden sports hall along with a curved timber dome roof spanning 55 metres over the pool area.

They are there in new houses and office blocks and town centre refurbishments and all the other

Billington Structures Ltd, 125, 126, 127, 128, 129, 130, 131, 132, 133, 134, 135, 136, 137, 138, 139, 140, 141, 142, 143, 144, 145, 146, 147, 148, 149, 150, 151, 152, 153, 154, 155, 156, 157, 158, 159, 160, 161, 162, 163, 164, 165, 166, 167, 168, 169, 170, 171, 172, 173, 174, 175, 176, 177, 178, 179, 180, 181, 182, 183, 184, 185, 186, 187, 188, 189, 190, 191, 192, 193, 194, 195, 196, 197, 198, 199, 200, 201, 202, 203, 204, 205, 206, 207, 208, 209, 210, 211, 212, 213, 214, 215, 216, 217, 218, 219, 220, 221, 222, 223, 224, 225, 226, 227, 228, 229, 230, 231, 232, 233, 234, 235, 236, 237, 238, 239, 240, 241, 242, 243, 244, 245, 246, 247, 248, 249, 250, 251, 252, 253, 254, 255, 256, 257, 258, 259, 260, 261, 262, 263, 264, 265, 266, 267, 268, 269, 270, 271, 272, 273, 274, 275, 276, 277, 278, 279, 280, 281, 282, 283, 284, 285, 286, 287, 288, 289, 290, 291, 292, 293, 294, 295, 296, 297, 298, 299, 300, 301, 302, 303, 304, 305, 306, 307, 308, 309, 310, 311, 312, 313, 314, 315, 316, 317, 318, 319, 320, 321, 322, 323, 324, 325, 326, 327, 328, 329, 330, 331, 332, 333, 334, 335, 336, 337, 338, 339, 340, 341, 342, 343, 344, 345, 346, 347, 348, 349, 350, 351, 352, 353, 354, 355, 356, 357, 358, 359, 360, 361, 362, 363, 364, 365, 366, 367, 368, 369, 370, 371, 372, 373, 374, 375, 376, 377, 378, 379, 380, 381, 382, 383, 384, 385, 386, 387, 388, 389, 390, 391, 392, 393, 394, 395, 396, 397, 398, 399, 400, 401, 402, 403, 404, 405, 406, 407, 408, 409, 410, 411, 412, 413, 414, 415, 416, 417, 418, 419, 420, 421, 422, 423, 424, 425, 426, 427, 428, 429, 430, 431, 432, 433, 434, 435, 436, 437, 438, 439, 440, 441, 442, 443, 444, 445, 446, 447, 448, 449, 450, 451, 452, 453, 454, 455, 456, 457, 458, 459, 460, 461, 462, 463, 464, 465, 466, 467, 468, 469, 470, 471, 472, 473, 474, 475, 476, 477, 478, 479, 480, 481, 482, 483, 484, 485, 486, 487, 488, 489, 490, 491, 492, 493, 494, 495, 496, 497, 498, 499, 500, 501, 502, 503, 504, 505, 506, 507, 508, 509, 510, 511, 512, 513, 514, 515, 516, 517, 518, 519, 520, 521, 522, 523, 524, 525, 526, 527, 528, 529, 530, 531, 532, 533, 534, 535, 536, 537, 538, 539, 540, 541, 542, 543, 544, 545, 546, 547, 548, 549, 550, 551, 552, 553, 554, 555, 556, 557, 558, 559, 560, 561, 562, 563, 564, 565, 566, 567, 568, 569, 570, 571, 572, 573, 574, 575, 576, 577, 578, 579, 580, 581, 582, 583, 584, 585, 586, 587, 588, 589, 590, 591, 592, 593, 594, 595, 596, 597, 598, 599, 600, 601, 602, 603, 604, 605, 606, 607, 608, 609, 610, 611, 612, 613, 614, 615, 616, 617, 618, 619, 620, 621, 622, 623, 624, 625, 626, 627, 628, 629, 630, 631, 632, 633, 634, 635, 636, 637, 638, 639, 640, 641, 642, 643, 644, 645, 646, 647, 648, 649, 650, 651, 652, 653, 654, 655, 656, 657, 658, 659, 660, 661, 662, 663, 664, 665, 666, 667, 668, 669, 670, 671, 672, 673, 674, 675, 676, 677, 678, 679, 680, 681, 682, 683, 684, 685, 686, 687, 688, 689, 690, 691, 692, 693, 694, 695, 696, 697, 698, 699, 700, 701, 702, 703, 704, 705, 706, 707, 708, 709, 710, 711, 712, 713, 714, 715, 716, 717, 718, 719, 720, 721, 722, 723, 724, 725, 726, 727, 728, 729, 730, 731, 732, 733, 734, 735, 736, 737, 738, 739, 740, 741, 742, 743, 744, 745, 746, 747, 748, 749, 750, 751, 752, 753, 754, 755, 756, 757, 758, 759, 760, 761, 762, 763, 764, 765, 766, 767, 768, 769, 770, 771, 772, 773, 774, 775, 776, 777, 778, 779, 780, 781, 782, 783, 784, 785, 786, 787, 788, 789, 790, 791, 792, 793, 794, 795, 796, 797, 798, 799, 800, 801, 802, 803, 804, 805, 806, 807, 808, 809, 810, 811, 812, 813, 814, 815, 816, 817, 818, 819, 820, 821, 822, 823, 824, 825, 826, 827, 828, 829, 830, 831, 832, 833, 834, 835, 836, 837, 838, 839, 840, 841, 842, 843, 844, 845, 846, 847, 848, 849, 850, 851, 852, 853, 854, 855, 856, 857, 858, 859, 860, 861, 862, 863, 864, 865, 866, 867, 868, 869, 870, 871, 872, 873, 874, 875, 876, 877, 878, 879, 880, 881, 882, 883, 884, 885, 886, 887, 888, 889, 890, 891, 892, 893, 894, 895, 896, 897, 898, 899, 900, 901, 902, 903, 904, 905, 906, 907, 908, 909, 910, 911, 912, 913, 914, 915, 916, 917, 918, 919, 920, 921, 922, 923, 924, 925, 926, 927, 928, 929, 930, 931, 932, 933, 934, 935, 936, 937, 938, 939, 940, 941, 942, 943, 944, 945, 946, 947, 948, 949, 950, 951, 952, 953, 954, 955, 956, 957, 958, 959, 960, 961, 962, 963, 964, 965, 966, 967, 968, 969, 970, 971, 972, 973, 974, 975, 976, 977, 978, 979, 980, 981, 982, 983, 984, 985, 986, 987, 988, 989, 990, 991, 992, 993, 994, 995, 996, 997, 998, 999, 1000

## Easi - for some...

The recent introduction of BS EN 13374, 'Temporary Edge Protection Systems', will inevitably direct contractors to the use of proprietary edge protection systems.

The transition from scaffold tube and fittings will be easy for some as easi-edge, a BCSA associate member, continues to grow and flourish, supplying a host of easi-edge products to the construction market. Easi-edge has been designed by chartered structural engineers and is one of the first, if not only, class B barrier system currently on the market. Now in regular use for over two years and with over 20 miles of barriers currently erected on prestigious projects throughout the UK,

easi-edge represents the ideal solution to edge protection on structural steel frames.

Describing on its use on the HSE's exemplary project City Square in Liverpool, Shepherd Construction's website declares "The 'easi-edge' protection system, is much lighter than traditional scaffolding, reducing manual handling issues. It is also quicker to erect from a site perspective as the majority of installation is done at ground level".

Contact: Bob King  
Tel: 01226 340 666  
Email: bking@billington-structures.co.uk  
www.billington-structures.co.uk

# Corporate Social Responsibility



**BILLINGTON  
CHARITY  
FOUNDATION**

**At Billington, we are committed to helping the local community thrive, and are proud of our continued support of both local and nationwide charities. Many members of staff across the Group have benefited from the amazing work that charities do, and establishing the Billington Charity Foundation is a way of expressing our gratitude and ensuring these charities can continue to provide their essential support.**

## The Billington Charity Foundation

The Billington Charity Foundation was launched in September 2016. The foundation works to improve the support Billington offers to local and national charities and communities.

Every year, we make financial or supportive contributions to local community activities and participate in charitable fundraising.





## SUSTAINABILITY

We recognise that all aspects of our operation may have wide ranging environmental impact and we are committed to minimising these impacts through a programme of continuous improvement.

We have a duty of care towards tackling the climate emergency and continue to commit resources and align our policies to address these issues. Sustainable procurement, innovative fabrication methods and carbon reporting ensure we develop new ways to reduce our carbon footprint. Year on year we achieve the BCSA Sustainability Gold Charter supporting them to reduce carbon within the steel industry.

In 2022, Billington Structures joined SteelZero, a global initiative by Climate Group of leading companies to speed up the transition to a net zero steel industry. As a SteelZero member, we have made a public commitment to procuring, specifying or stocking 100% net zero steel by 2050, and 50% lower carbon steel by 2030.



**CLIMATE GROUP  
STEELZERO**



# Our ESG commitments...

*...the future is now*



## ENVIRONMENTAL

- Creation of Group ESG committee to identify, develop and implement carbon reduction projects.
- The Company maintains the BCSA Gold Standard awarded for meeting the requirements of the Steel Construction Sustainability Charter.
- Billington has adopted policies that comply with ISO BS EN 14001 - Environmental Management System.
- Billington has joined the SteelZero initiative committing to procure 100% net zero steel by 2050.

## SOCIAL

- Support the communities in which the companies operates through taking active involvement in community projects.
- Active training programmes across all levels of the business to develop our people.
- Partnerships with training providers to support people back into employment.
- Billington Charity Foundation, launched and active for nearly 10 years, continues to support local and national charities and community activities.

## GOVERNANCE

- Committed to effectively managing company risk and reporting, with principles of safety and best practice continually set at the forefront of all of our projects and processes.
- Clear vision and guidance to our people, ensures we align our service excellence for our clients.
- Be actively involved with and support STEM commitments in education.
- To ensure the interests of the Company, management, shareholders and wider stakeholders are aligned.

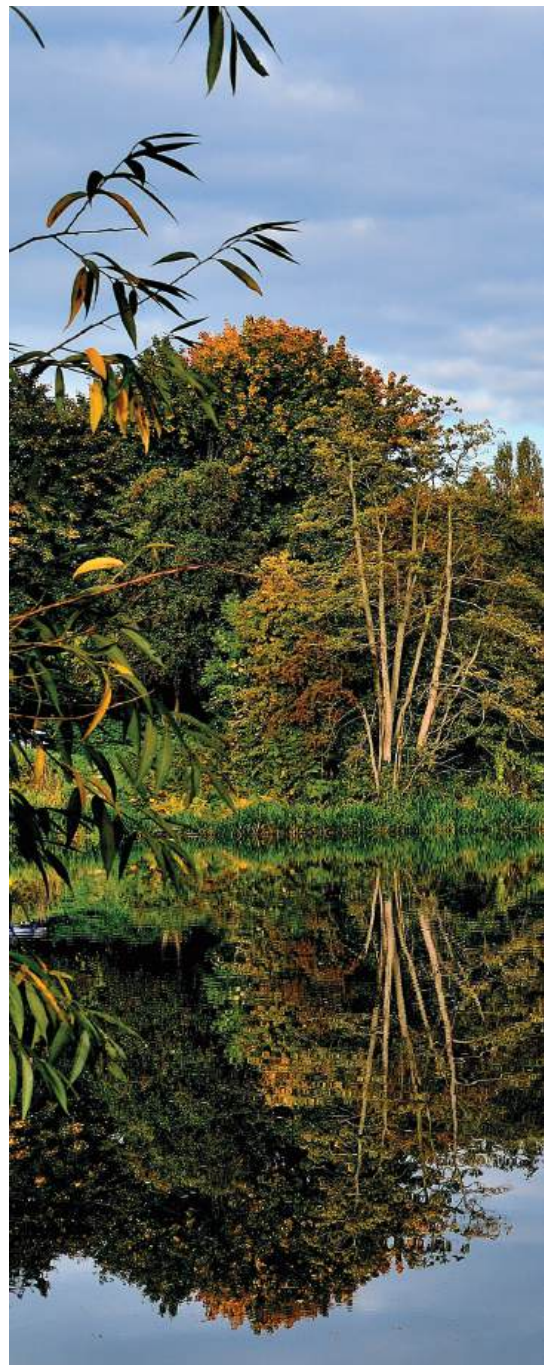
# Our Future



**The Group is recognised as one of the UK's leading fabricators and construction services provider. Looking ahead to the future, we will continue our journey of growth and success, investing in our facilities, our people and supporting our local communities and charities.**

As a Group we are committed to developing and adapting our practices to help fight climate change and become Net Zero by 2050.

We have accomplished an incredible amount together during our 75 years, empowering countless people and allowing them to realise their full potential. But this is just the start, what matters most is what we do next.





**75<sup>th</sup>**  
**Anniversary**

A huge thank you to you all for what we have achieved so far; employees, suppliers and clients that have been with us over the years.

You have made Billington Structures and the Group what it is today. Here's to the next 75 years!



**75<sup>th</sup>**  
**Anniversary**



1947 - 2022



**Billington**  
Holdings Plc

Billington Holdings Plc, Steel House, Barnsley Road, Wombwell, Barnsley, South Yorkshire S73 8DS

01226 340666 | [info@billington-holdings.plc.uk](mailto:info@billington-holdings.plc.uk) | [www.billington-holdings.plc.uk](http://www.billington-holdings.plc.uk)